

SOLD



5 Glen Rovala St, Brahma Lodge



Investors Delight!

Mark and Jason are happy to present this double brick family home, located on 722m2 approximate block in a peaceful street in Brahma Lodge. This home is close to schools, transport, post office, shopping precincts and only approximately 20 minutes to the city.

An opportunity like this is simply one not to be missed.

Featuring a large lounge on entry, complete with gas heating, R/C air conditioning and carpeted floors that flow throughout the home.

The kitchen is neat and tidy and has enough space to renovate and install the kitchen of your dreams. The kitchen also features gas appliances and a walk in pantry.

The home boasts three good sized bedrooms with the master having built in robes. All rooms are serviced by a Breezair 6 outlet ducted evaporative cooling system keeping you

🛏 3 🚿 1 🚗 1

Price SOLD for
\$277,000

Property Type Residential

Property ID 895

Agent Details

Dan Vanin - 0417 373 719
Mark Bailey - 0412 085 124

Office Details

Bailey Property - Sales &
Property Manangement
1282 North East Rd Tea
Tree Gully, SA, 5091
Australia
08 7320 3949

comfortable in the warmer months.

Out the back you will find a verandah area complete with easy care green gardens, which will be a great space for all your summer entertainment. To top it all off you have peace of mind knowing that your car is safe behind a secure roller door.

Through the roller door you will have access to your workshop/car or boat storage shed that is fully powered.

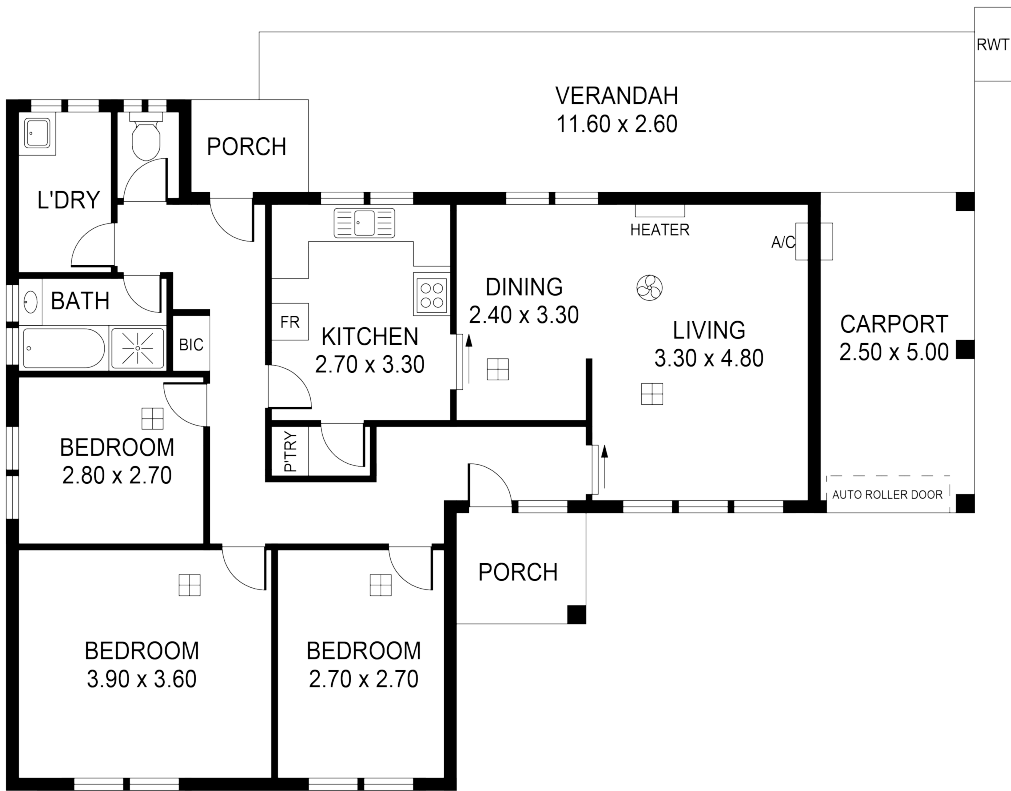
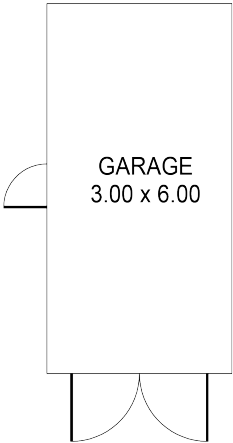
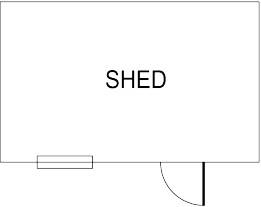
This home has huge development potential (STCC) with the block having a 20m frontage and is 36m in depth.

Not only is this family home jam packed with features but it will also offer you fantastic value for money so buying this home is an absolute no brainer.

This home is currently tenanted till the 14th of March 2020 for \$295 a week managed by Bailey property Management.

Investment oppourtunities like this don't last for long so you better get in quick.

The above information provided has been furnished to us by the vendor/s. We have not verified whether or not that information is accurate and do not have any belief in one way or the other in its accuracy. We do not accept any responsibility to any person for its accuracy and do no more than pass it on. All interested parties should make and rely upon their own inquiries in order to determine whether or not this information is in fact accurate.



AREAS (Approx.)		m ²
LIVING		105.99
SHED		10.00
PORCHES		6.63
GARAGE		18.00
VERANDAH		30.16
CARPORT		12.50
TOTAL		183.28

5 Glen-Rovala Street, Brahma Lodge